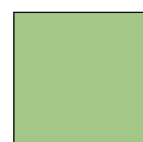
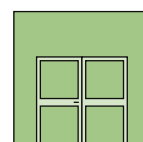
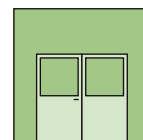
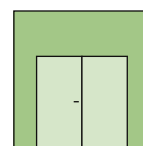


Technical information



System Schröders ESN-2

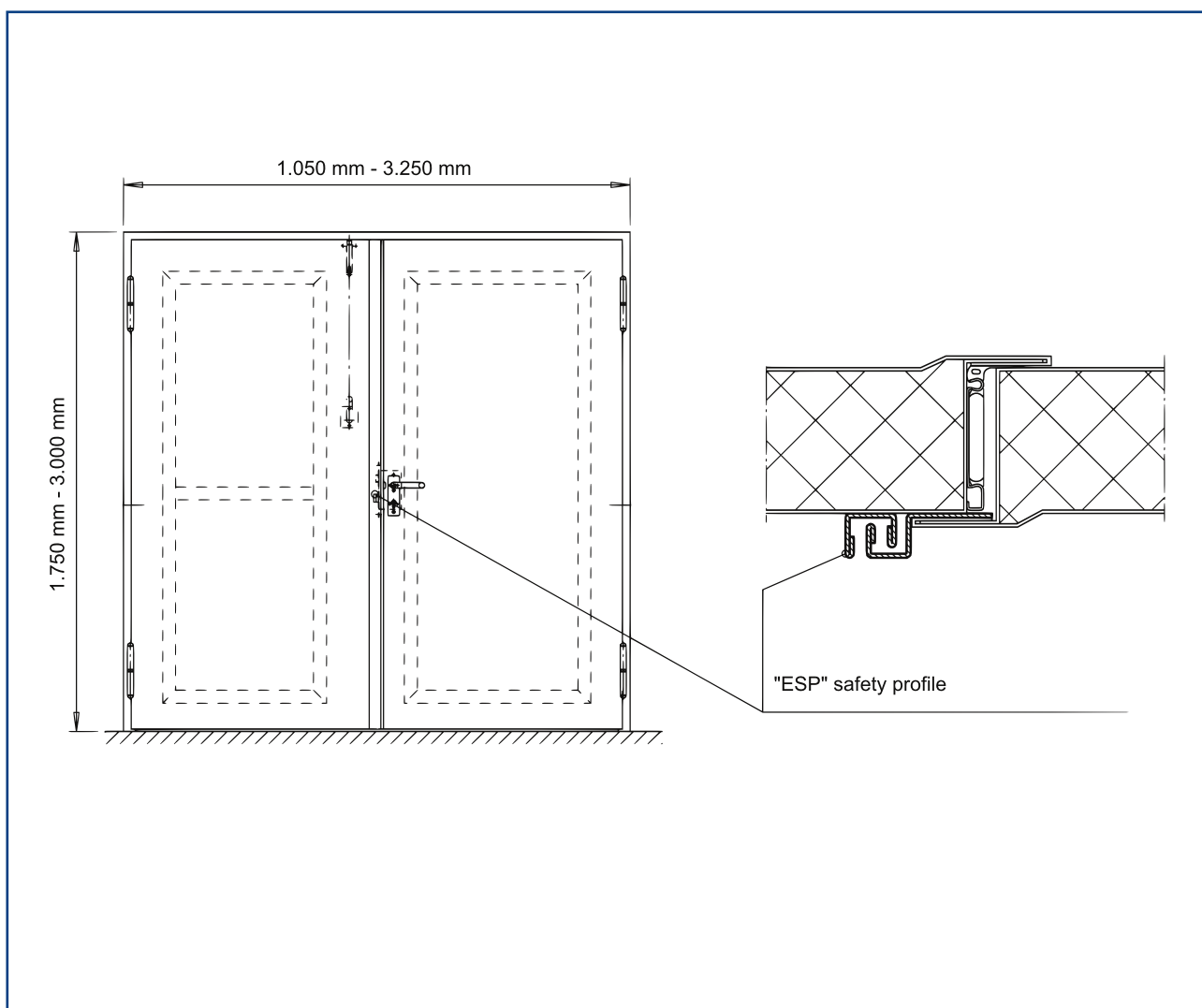
Double-leaf burglar resistance steel door

■ according to EN 1627

■ burglar resistance class **RC4**
class **RC3**
class **RC2**
class **RC1**

Burglar resistance steel door "System Schröders ESN-2"

- **Burglar resistance** according to EN 1627 ff, up to resistance class RC4
- **Thermal transmittance** according to EN ISO 10077-1, U_D -value $\geq 1,9$
 - optional **acoustic performance** according to EN 20140-3, up to R_W (C;C_{tr}) = 42 dB*
 - optional as **external door** according to EN 14351-1
 - optional as **internal door** according to ENV 14351-2



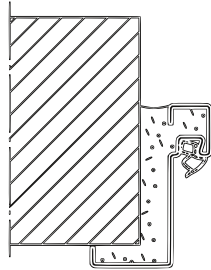
Technical data

Dimensions	width 1,050 mm up to 3,250 mm height 1,750 mm up to 3,000 mm
Door leaf	Leaf thickness 68 / 70 mm - smooth, double-walled plate thickness 1.5 mm to 2.0 mm mineral wool filling (other fillings on request)
Door frame	Door frame "ZNG", elastic rubber seal (optional) corner frame, optional closed frame
Glazing (optional)	Glass dimensions variable minimum frieze width: 130 mm optional cross bars RC4: Glazing according to EN356 min. P6B RC3: Glazing according to EN356 min. P5A
Glazing beads	with concealed screws
Floor seal	optional retractable floor seal or patented sliding seal
Lock options	Active leaf RC4: - Three-point lock (optional NEMEF, BMH, HZ-Lock, Fliether, Dorma, eff eff) - securing pins - for panic lock with full-surface drilling protection RC3: - Simple locking with single-latch bolt lock min. DIN 18 251 class 3 - optional panic lock (not with glazing) - door height > 2.500 mm: - Three-point lock (optional NEMEF, BMH, HZ-Lock, Fliether, Dorma, effeff) - securing pins Fixed leaf RC3 / RC4:- Shoot bolt with locking up and down - Securing pins
Rebate protection	rebate protection through ESP safety profile (patent-protected))
Hardware / fittings	- optional any appropriate lever handle set - optional panic push-bar - RC4 performance: Security fitting 18257 ES3 - RC3 performance: Security fitting 18257 ES2
Installation	- in masonry - in concrete - in aereated concrete - in steel frame - optional blunt mount
Options	additional safety equipment possible - (magnetic contact, bolt contact, electric door opener) - with door closers thick rebate design stainless steel further versions on request

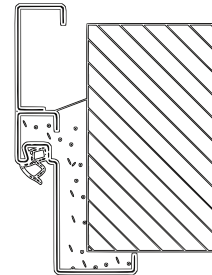
Installation variants

Installation in

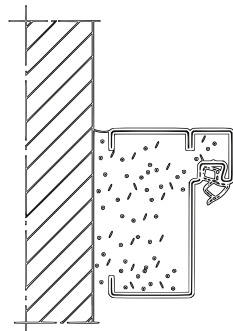
Masonry /
concrete



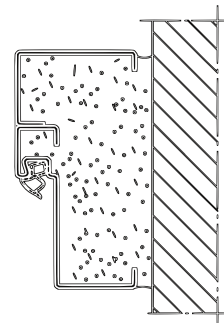
Corner frame
Corner with counter frame



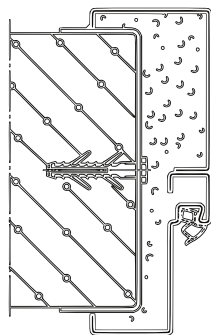
Masonry /
concrete



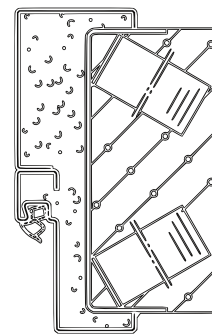
Block frame
Corner with counter frame



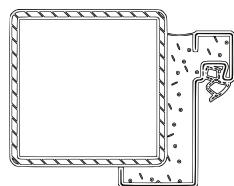
Aerated
concrete



Wrap-around frame
Corner with counter frame



Steelprofile



Corner frame
optional with
tube, L- oder U-profile

